

CIMVHR SPEC Student and Post-Doc Virtual Mentoring Event Information Package

Thank-you for registering for the CIMVHR SPEC Virtual Mentoring Event. We are looking forward to seeing you soon! This document will provide you with some helpful information to make the most out of the event.

Event Date and Time

- Date: Thursday, 24 September 2020
- Time: 1:00 – 3:30PM EDT.

Logging In

- The Zoom room will be open starting at 12:30PM.
- Please log in at least 15 minutes prior to the event start time (12:45PM EDT).
- Please find the Zoom link in the event email sent Tuesday, September 22 from info@cimvhr.ca.
- If you are having difficulty logging in, please contact stephanie.christophe@queensu.ca.

Cancelling Registration

As we have limited space available and a growing waitlist, please let us know as soon as possible by email at cimvhr@queensu.ca if you are unable to attend. This will allow us to invite other students/post-doctoral fellows from the waitlist to participate.

Participating

- Please keep your mic on mute while you are not speaking.
- If possible, please keep your camera on, especially during the World Café portion of the event.
- If you have a question during the panel discussion, please type it into the chat box and it will be read by an organizer.
- If you experience a technological issue, please use the chat function to ask for assistance. If you cannot use the chat function, email stephanie.christophe@queensu.ca.
- See some tips for using Zoom at the bottom of this document.

Trouble Shooting Tips for Zoom

- Be sure to log in early so any technical issues can be resolved before the event begins.
- Be sure to test your camera and audio settings when you log in to ensure that they are working properly. (You will be prompted to do this when you log in).
- If your audio is not working, try checking the audio settings by clicking in the arrow above the mic icon on the bottom left of the screen.
- If your camera is not working, try checking the camera settings by clicking in the arrow above the mic icon on the bottom left of the screen (beside the mic icon).

Agenda (times in Eastern Time)

12:45PM: Log In

1:00PM: Welcome from CIMVHR and the SPEC



1:10PM: Panel Discussion with Mentors

Each mentor will share their career path experiences and then participants will have an opportunity to ask questions.

We have four wonderful mentors who will share their experiences and discuss their research career paths with us. You can find their information below.



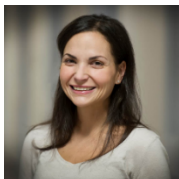
LCol Andrew Beckett, CD, MD, FRCSC, FACS, Trauma Advisor to the Surgeon General, Chief of General Surgery, Canadian Armed Forces; Assistant Professor, University of Toronto; Assistant Professor, McGill University; Medical Director, Trauma Program, St. Michael's Hospital.



Tim Black, PhD, R. Psych., CIMVHR Fellow; Associate Professor of Counselling Psychology, Department Chair for Educational Psychology and Leadership Studies, Faculty of Education, University of Victoria.



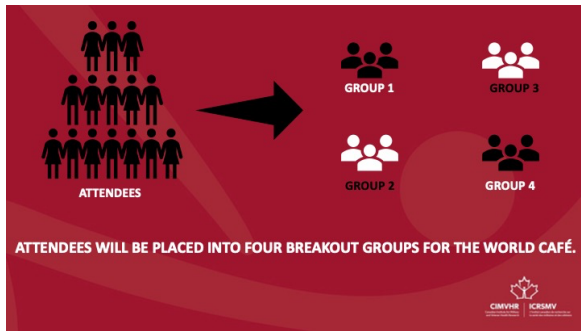
Deborah Norris, PhD, CIMVHR Fellow; Associate Professor, Department of Family Studies and Gerontology, Mount Saint Vincent University.



Rose Ricciardelli, PhD, Professor, Department of Sociology, Memorial University of Newfoundland; Associate Scientific Director, Canadian Institute for Public Safety Research and Treatment.

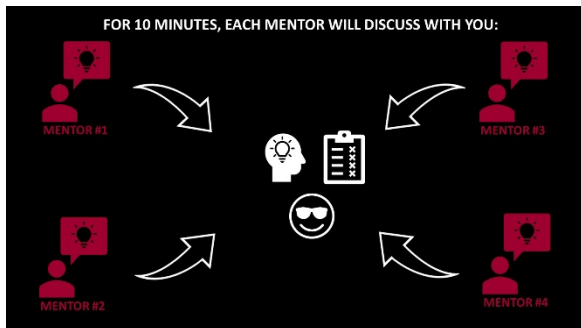
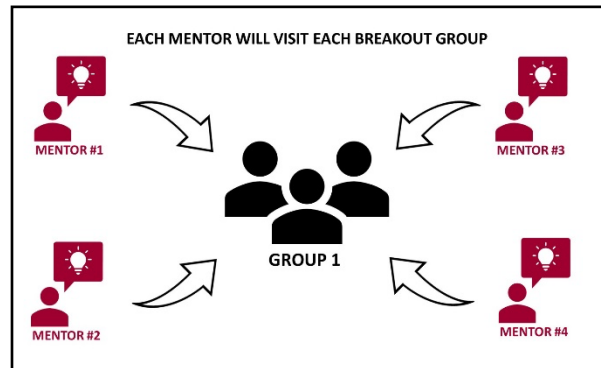
You can find out more about the mentors on the SPEC Mentoring Event website: <https://symposium-series.cimvhr.ca/en/spec>

2:00PM: World Café: The Good, the Bad, and the Awesome!



Participants will be divided into four smaller groups.

Each group will be visited by all four mentors and engage in discussion of the good (opportunities), the bad (challenges), and the awesome (achievements) of the mentors' career paths and research expertise.



Each mentor will spend 10 minutes with each group.

After the breakout room discussions, we will come back together as a group to summarize the discussions.

Things to Remember to Make the Most out of Your World Café Experience

- Stay in your assigned breakout rooms
- Use information from previous mentors to extend and deepen your conversations with mentors
- Stay engaged – don't be afraid to ask questions or ask for advice!

3:25PM: Wrap Up and Thank-You

Feedback Survey

You will receive a short feedback survey following the event. Your feedback on this event will be valuable in making future student and post-doctoral engagement events as meaningful as possible.

If you have any questions or concerns prior to the event, please feel free to email cimvhr@queensu.ca.